



**Nexmosphere**

High Tech Campus 10 (M $\mu$  building)  
5656 AE Eindhoven • The Netherlands

**T** +31 40 240 7070  
**E** [info@nexmosphere.com](mailto:info@nexmosphere.com)

# PRODUCT CATALOG

2020 Q1



## XPERIENCE

The definition of an experience is something that **happens to you** that **affects how you feel**. A true experience is an event that addresses the senses, creates emotion and in doing so, is **memorized**.

Nexmosphere products are used to create interactive **Xperiences** with technology. These Xperiences impact someone's in-store experience by inviting them to explore merchandise, providing more info through visual or audio content and offering selection guidance while setting the right atmosphere with beautiful lighting effects and communicating a brand's story.

## ELEMENTS

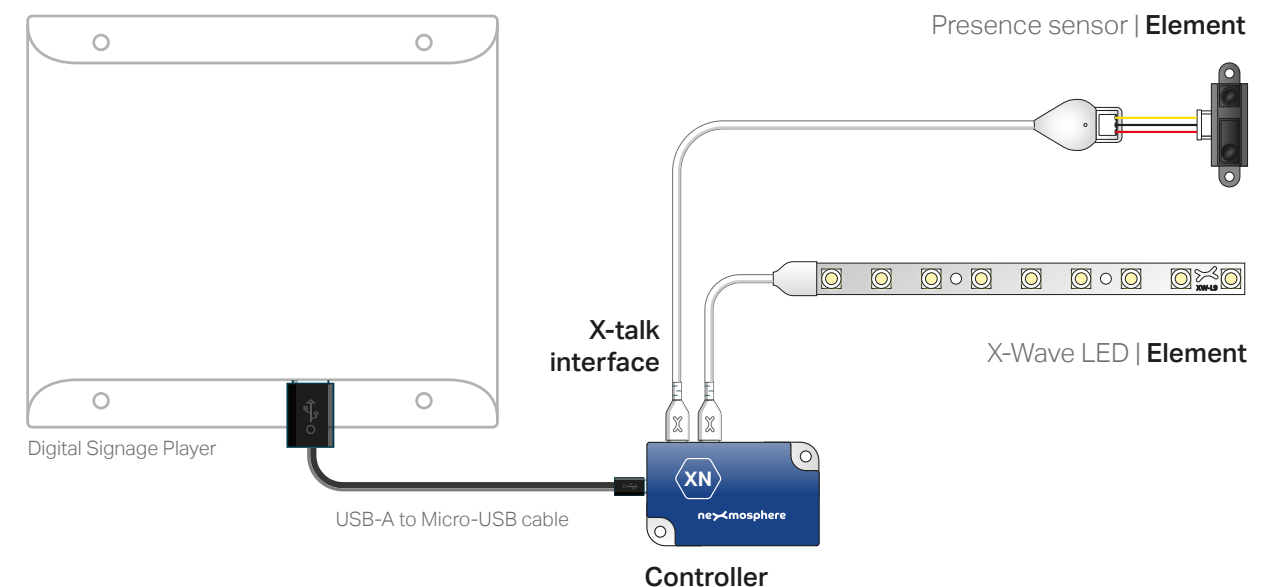
Nexmosphere Elements are our collection of sensors and actuators, such as pick-up sensors, presence sensors or LED. By combining different Elements on our Xperience controllers, interactive experiences can be created.

## CONTROLLERS

Xperience controllers are used to combine Elements onto and connect them to any Digital Signage player or PC. The controller is the part of the system that translates the communication coming from the Elements to the connected device and vice versa. Some of the controllers have additional functionalities embedded into them such as LED control or audio switching.

## X-TALK

The connection method between Nexmosphere's Elements and controllers is called X-talk. Calculate the number of X-talk channels needed by adding up the number of Elements used and pick the right Controller model for the job.



ELEMENTS | sensors and actuators

X-Eye Range	people tracking	5
XR Range	RFID pick-up sensors	6
XF Range	wireless pick-up sensor	7
XW Range	animated LED lighting	8
XZ Range	object detection	9
XE Range	environmental sensing	10
X-Snapper Range	wired pick-up sensor	11
XD Range	easy interfacing	13
	wired pick-up sensors	14
XT Range	capacitive touch & buttons	15



CONTROLLERS | connecting Elements

XN Range	nano Xperience controllers	18
XC Range	compact Xperience controllers	19
XM Range	modular Xperience controllers	21



ELEMENTS  
sensors and actuators



X-EYE RANGE | people tracking

The Nexmosphere XY range offers a variety of sensors that detect and analyze presence, distance and demographics of the people in front of your digital signage or POS installation. Whether you want to increase the impact by triggering the right content at the right time, want to program attractive lighting changes and increase engagement, or want to collect valuable data, the XY range has a sensor which provides the input to do so.

X-EYE PRESENCE & PROXIMITY

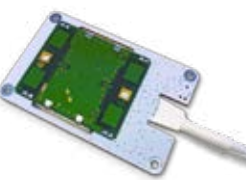


The X-Eye Presence sensors are narrow-beam IR proximity sensors that detect if an object or person is present and indicate the distance to the person from the sensor.

IR proximity technology

XY-11x	05cm - 80cm
XY-14x	15cm - 150cm
XY-17x	50cm - 500cm

X-EYE MOTION



The X-Eye Motion sensor detects the amount of motion in its detection field. It can be installed behind any non-metal surface, resulting in an invisible embedded sensor solution.

Doppler radar

XY-320	1.2m - 10m 10.525 Ghz
--------	--------------------------

X-EYE HEATMAP



The X-Eye Heatmap casts an invisible floor grid while locating people and tracking their movement within the grid using GDPR-compliant technology.

IR Heat sensing grid

XY-430	3m x 1.5m area 16 x 3 resolution
--------	-------------------------------------

new product  
consult timing and availability

X-EYE GENDER



The X-Eye Gender sensor detects the gender and age range of a person. It does not require network connectivity and doesn't store video data, making it 100% GDPR-compliant.

Gender recognition  
Age estimation

XY-510	15cm - 120cm
XY-520	35cm - 250cm

XR RANGE | RFID pick-up sensors

The Nexmosphere XR range offers the products needed to build wireless pick-up sensors using RFID technology. The antenna driver detects a tag as soon as its close to the antenna and communicates the number of the tag back to the Xperience controller. Adhere the tags under the displayed merchandise and trigger the associated video content when the products are picked-up or placed down.

XR ANTENNAS



The XR antenna is a slim, easy to built-in RFID antenna. It can be hidden behind a variety of non-metallic design materials like acrylics, wood, glass and stone. Define your detection surface area and match it with the right shape and size antenna for your product and application.

RFID technology

XR-C05	circular, 50mm
XR-C10	circular, 100mm
XR-A45	rect., 297x148mm
XR-A50	rect., 210x148mm
XR-A55	rect., 210x74mm
XR-A60	rect., 148x106mm
XR-A66	rect., 148x52mm
XR-A70	rect., 105x74mm
XR-A80	rect., 74x52mm 100mm cable

XR ANTENNA DRIVER



The XR Antenna driver receives and processes the signals coming from the connected antenna and the RFID tag. It generates the triggers that are sent to the connected Xperience controller. It can be used in combination with any of the antenna, and -controller models.

RFID technology

XR-DR1	13.56 Mhz RFID Multi-Tag detect
--------	------------------------------------

RFID TAGS



The standard tags for use with this product range, are industry standard tags that can be ordered already programmed with their respective numbers, or as empty tags that still require programming and labeling.

RFID technology

XNR tag	26mm, programmed
XNB tag	26mm, unprogrammed
all	IC S50

XF RANGE | wireless pick-up sensors

The Nexmosphere XF range offers an innovative way to use wireless pick-up sensors without the need for installing any hardware within your POS furniture or shelving. The battery-powered sensors can be placed in, or -under your merchandising and facilitate triggering the programmed content and/or lighting effects on the Xperience controller when the merchandising is interacted with by the shopper. Use this technology to easily transform existing store installations into interactive ones with minimal effort.

P3 WIRELESS PICK-UP SENSOR



The P3 sensor is a battery-powered pick-up sensor that can be placed in, or -under merchandising. The sensor detects any change of positioning when the shopper interacts with the merchandising on display and translates this into triggers that are sent towards the controller unit that can be invisibly installed at distance from the actual sensor.

Pick-up detection (accelerom.)  
Wireless comm. 2.4Ghz ANT+

- XF-P3W | white housing
- XF-P3B | black housing
- XF-P3N | no housing

- all | 2 years avg. battery life
- 8-10m range
- 32mm diameter

new product  
consult timing and availability

EM-F WIRELESS X-TALK INTERFACE



The EM-F Extension Modules receive the signals coming from the P3 sensors after these have been paired with a wireless X-talk interface. Each P3 sensor connects to its own wireless X-talk interface on the EM unit. Combine a maximum of 5 EM units onto the controller unit, allowing up to 40 sensor connections on one single controller. All EM modules only work in combination with an XM Xperience Controller.

Wireless X-talk receiver

- EM-F1 | 1 channel
- EM-F4 | 4 channel
- EM-F8 | 8 channel

new product  
consult timing and availability

XW-RANGE | animated LED Lighting

The Nexmosphere X-Wave range consists of a variety of animated LED lighting products. They allow incorporating creative lighting effects in your installations that enhance interactivity. Use animated lighting to attract, highlight, contrast, indicate and guide.

X-WAVE



The X-Wave is a rigid linear LED board fitted with RGB LEDs. Set any RGB color to match or contrast merchandising or brand style. Settings as dimming speed, light output and sinus repetition can be adjusted to match the required lighting behavior and effect.

Linear wave lighting

- XW-L56 | 5 LEDs
- XW-L96 | 9 LEDs

X-WAVE LINEAR INTERFACE



The X-Wave Linear interface enables Wave LED control over flexible pixel LED strips. Each interface allows connection to one LED strip. Strips can be divided into segments over which the X-Wave animations can be executed.

Pixel LED strip interface  
Wave animation control

- XW-DL6 | max. control 120 LEDs
- max 12 LEDs / segment

also available as MicroModule, assembled on XN-135 (XN-138MBL)

X-WAVE SELECTION INTERFACE



The X-Wave Selection interface enables Selection LED control over flexible pixel LED strips. Each interface allows connection to one LED strip. It allows splitting up LED strips into segments that can be illuminated to indicate products that correspond to selection inputs given by the shopper.

Pixel LED strip interface  
Selection animation control

- XW-DS6 | max. control 120 LEDs
- max. 26 segments
- max 15 LEDs /segment

also available as MicroModule, assembled on XN-135 (XN-138MBS)

X-WAVE COLOR



The X-Wave Color LED is an X-Dot housed product fitted with one RGB pixel LED. It can be programmed in any color and fade from one color to another. Use it as a visual indicator to mark a certain spot or product of interest.

RGB indication LED

- XW-C56 | RGB LED
- Glow animations



XZ RANGE | object detection

The Nexmosphere XE range offers a variety of sensors that detect the status of the objects on which they are applied. By detecting the object status, we enable the possibility to log and communicate these values, as well as actively respond to critical threshold values.

HUE COLOR SENSOR



The XZ- Hue color sensor can detect the color of objects that are held against or placed upon the sensor. Any color can be detected and communicated back to any Xperience controller. To be used in applications where the required content trigger is linked to the color of an object.

Color sensing

XZ-H60 | Hue  
Saturation  
Brightness

new product  
consult timing and availability

LIGHT SENSOR



The XZ- Light sensor can detect the amount of light that falls in the sensor. This information can be used to determine whether merchandise is placed on top of the sensor or not, to create Lift & Learn or Place & Learn applications whenever RFID or battery-powered sensors can't be applied.

Object Pick-up detection  
Light sensor

XZ-L20 | adj. trigger values  
X-Dot form factor

ANGLE SENSOR



The XZ- Angle sensor can detect the orientation of the sensor at any giving moment, by calculating its angle as opposed to its default relative position that was previously set.

Angle orientation detection

XZ-A40 | 3-axis orientation  
adj. trigger positions

new product  
consult timing and availability

XE-RANGE | environmental sensing

The Nexmosphere XE range offers sensors that analyze and communicate environmental conditions. By detecting the surrounding circumstances, we enable the possibility to log and communicate these values, as well as actively respond to certain critical threshold levels such as high temperature.

AMBIENT LIGHT SENSOR



The XE- Ambient light sensor detects the amount of light in its surroundings and communicates the amount of lux back to the Xperience controller, facilitating adjustment of lighting levels based on environmental light conditions.

Ambient light sensor (lux)

XE-A20 | 1 - 120.000 lux

new product  
consult timing and availability

TEMPERATURE SENSOR



The XE- Temperature sensor detects temperature and humidity levels and can be adhered to heat sensitive objects. Triggers can be used to build a log file for warranty evaluation and to send messages to centralized systems to help protect installations. This simplifies compliance to a growing body of regulations within the digital signage industry.

Temperature detection  
Humidity detection

XE-T50 | -25°C - +75°C temp  
1 - 99% Humidity

new product  
consult timing and availability



X-SNAPPER RANGE | wired pick-up sensors

The Nexmosphere X-Snapper range offers magnetic pick-up sensors that can also be used as active security devices. Merchandise is mounted onto the sensor and when lifted or placed back, the X-Snapper sends a trigger to the connected Xperience controller, facilitating content triggering and measurement of pick-up durations. The security function sends triggers whenever merchandising is removed, the wire is cut or pulled out. This sensor is specially designed to attach to handheld devices of different sizes and shapes.

XS SERIES



The XS-Snapper detects either release from, or connection with, -its passive counter block and sends triggers to the connected Xperience controller accordingly, both registering pick-ups and place downs. Use the XS-Snapper for presenting smaller, handheld devices such as shavers, toothbrushes or phones.

- Wired pick-up sensor (HALL)**  
**Active security**
- white housing:*  
**XSW-X16** | pick-up only  
**XSW-X26** | security only  
**XSW-X36** | pick-up and security  
**XSW-N0S** | counter block

- black housing:*  
**XSB-X16** | pick-up only  
**XSB-X26** | security only  
**XSB-X36** | pick-up and security  
**XSB-N0S** | counter block

all | coiled cable

XL SERIES



The XL-Snapper detects either release from, or connection with, -its passive counter block and sends triggers to the connected Xperience controller accordingly, both registering pick-ups and place downs. Use the flat XL-Snapper for presenting larger devices like tablets and the curved model for hair stylers.

- Wired pick-up sensor (HALL)**  
**Active security**
- white housing, flat cover*  
**XLFW-X16** | pick-up only  
**XLFW-X26** | security only  
**XLFW-X36** | pick-up and security  
**XLFW-N0S** | counter block

- black housing, flat cover*  
**XLFB-X16** | pick-up only  
**XLFB-X26** | security only  
**XLFB-X36** | pick-up and security  
**XLFB-N0S** | counter block

- all options also available with curved cover. E.g.:*  
**XL~~C~~W-X36** | pick-up and security  
**XL~~C~~B-X36** | pick-up and security

X-SNAPPER ACCESSORIES | pedestals, holders & spares

The Nexmosphere X-snapper range is complemented by accessories and spare parts specifically designed for instore use. This makes completion and installation of POS designs fast and easy while providing a professional finish.

X-SNAPPER DOUBLE



The X-Snapper double consists of two magnetic X-snapper blocks attached to a single continuous spiral cable. This double snapper is not attached to an Xperience controller and does not send triggers. It can be used to securely display products and make sure they are not misplaced after use.

Passive merchandize security

- XSW-X1S** | 100mm cable  
**XSW-X2S** | 200mm cable  
**XSW-X3S** | 300mm cable

- XLFW-X1S** | 100mm cable, XL  
**XLFW-X2S** | 200mm cable, XL

*XL versions also available with curved cover*

X-SNAPPER STAND



The X-Snapper stand is a pedestal designed for use with the X-Snappers. The stand is screw fixed in the POS furniture and the X-Snappers are installed on top of its surface. It allows placement of the merchandize at an angle facing the shopper, giving a 'floating' appearance while the stand itself remains visually hidden behind the merchandise.

Merchandize placement

- XAT-HL2** | 25°, low height  
**XAT-HL4** | 45°, low height  
**XAT-HM2** | 25°, medium height  
**XAT-HM4** | 45°, medium height  
**XAT-HH2** | 25°, high height  
**XAT-HH4** | 45°, high height

all | transparent

X-SNAPPER SPARE TAPE



The X-Snapper spare tapes can be used when merchandising is replaced on the POS because of maintenance reasons or the renewal of merchandise during seasonal rotation.

Double-sided tape

- XAS-TS1** | 10-pack  
**XAS-TS5** | 50-pack  
**XAS-TS9** | 1365 roll
- all** | double-sided industrial standard

PRICE TAG HOLDER



The price tag holder is designed for use with the X-Snapper stand. It can be screwed in place using the screw fixation of the X-snapper stand. This leaves dedicated space to the side of the X-snapper stand where you can place price and product information.

Double-sided tape

- XAT-PLS** | low, short length  
**XAT-PLL** | low, long length  
**XAT-PLL** | high, short length  
**XAT-PHL** | high, long length
- all** | 20° viewing angle transparent

XD RANGE | easy interfacing

The Nexmosphere X-Dot range offers a variety of functions divided into two subdivisions: easy interfacing and wired pick-up sensors. They share their ultra-small form factor and the cable design that offers the flexibility of both bottom and side feed installation. Giving the option to use the Elements directly on a surface or to hide the cable from sight. They're easy to install, use and maintain due to the non-marking double-sided installation tape and high-quality finishing.

X-DOT SERIAL INTERFACE



The X-Dot Serial interface connects a USB or serial port from a 3rd party device -such as a screen-, to any Nexmosphere controller. This enables bi-directional communication between the connected 3rd party device and the Nexmosphere Controller.

- Serial interfacing
- |         |                 |
|---------|-----------------|
| XDW-S30 | serial over USB |
| XDW-S40 | RS-232 serial   |
| XDW-S50 | TTL serial      |
- new product  
consult timing and availability

X-DOT I/O INTERFACE



The X-Dot I/O is a versatile interface to be used with industry-standard push buttons with an embedded LED ring or with any other generic I/O device. The onboard LED controller offers full control over the LED behavior.

- I/O interfacing
- |         |          |
|---------|----------|
| XDW-I36 | 3.3V I/O |
| XDW-I56 | 5.0V I/O |

X-DOT MOTION INTERFACE



The X-Dot Motion interface is to be used with an industry-standard 5V controlled PIR or IR-technology based sensor. Sensor models with various beam angles and detection ranges can be used on this small interface enabling seamless integration.

- PIR/IR interfacing
- |         |              |
|---------|--------------|
| XDW-M06 | PIR/IR<br>5V |
|---------|--------------|

X-DOT BUZZER INTERFACE



The X-Dot Buzzer is a dual interface for 5V buzzer/ tweeter devices that can be implemented whenever triggering confirmation sounds is required in an installation. I.e. alarm functionality, beep confirmation of an executed action, or attention requested.

- PIR/IR interfacing
- |         |                           |
|---------|---------------------------|
| XDW-B06 | interface only            |
| XDW-B46 | interface<br>incl. beeper |

XD RANGE | wired pick-up sensors

The Nexmosphere X-Dot range offers a variety of functions divided into two subdivisions: easy interfacing and wired pick-up sensors. They share their ultra-small form factor and the cable design that offers the flexibility of both bottom and side feed installation. Giving the option to use the Elements directly on a surface or to hide the cable from sight. They're easy to install, use and maintain due to the non-marking double-sided installation tape and high-quality finishing.

X-DOT X



The X-Dot X is a wired pick-up sensor that can also be used as an active security device. The sensor is mounted onto the merchandise using double-sided tape. When a product is lifted or placed back, the X-Dot sends a trigger to the connected Xperience controller. The security function sends triggers whenever merchandising is removed, the wire is cut or pulled out.

- Wired pick-up sensor (accelerom.)  
Active security
- white housing:
- |         |                      |
|---------|----------------------|
| XDW-X16 | pick-up only         |
| XDW-X26 | security only        |
| XDW-X36 | pick-up and security |
- XDW-X36C | pick-up and security  
coiled cable
- black housing:
- |         |                      |
|---------|----------------------|
| XDB-X16 | pick-up only         |
| XDB-X26 | security only        |
| XDB-X36 | pick-up and security |
- XDB-X36C | pick-up & security  
coiled cable

X-DOT X SPARE TAPES



The X-Dot spare tapes can be used when merchandising is replaced on the POS because of maintenance reasons or the renewal of merchandise during seasonal rotation.

- Double-sided tape
- |         |           |
|---------|-----------|
| XAS-TX1 | 10-pack   |
| XAS-TX5 | 50-pack   |
| XAS-TX9 | 2750 roll |
- all | double sided  
industrial standard



XT RANGE | capacitive touch & mechanical buttons

The Nexmosphere X-Touch range can be applied when looking to integrate buttons. The implementation of buttons allows conversion from static digital signage, into interactive and responding presentations by having the shopper give input choices and selection options. Buttons that are fitted with programmable LEDs can invite the shopper to start interacting and make the shopper journey intuitive by giving visual feedback on the selected options.

TOUCH BUTTONS



The X-Touch buttons are capacitive and detect a person’s touch on the button or an overlying material. The technology works with multiple non-metal overlay materials, such as acrylic, glass, cardboard, and wood. They can be integrated into furniture without visually drawing away from the design. The button sensitivity can be adjusted, and they are available in various sizes and configurations.

Capactive touch LED control	
XT-4FW6	4 small butons, linear
XT-4GW6	4 small butons, rect.
XT-1EW6	1small button
XT-1GW6	1 large button
all	fitted with button LEDs

PUSH-BUTTON INTERFACE



The X-Touch button interface is a 4-channel push-button interface with LED control and can be used in combination with industry-standard push buttons. It allows the connection of up to four buttons onto a single interface. This results in the connection possibility of up to 9 push buttons even on the smallest Xperience Controller. Programmable LED output options are on, off, slow and fast blink.

Push-button interface LED control	
XT-B4N6	4 interfaces 3.3V LED contr. easy click-in
Push buttons (accessory item)	
S-B90xxx	19mm standard
S-B95xxx	19mm value line

CONTROLLERS  
connecting Elements



CONTROLLERS

Xperience controllers are used to combine Elements onto and connect them to any Digital Signage player or PC. The controller is the part of the system that translates the communication coming from the Elements to the connected device and vice versa. Some of the controllers have additional functionalities embedded into them such as LED control or audio switching.

API

Each controller runs Nexmosphere’s API. This API provides full control over all connected Elements to the Digital Signage player to which the controller is connected.

Each time a sensor is triggered, an API command is automatically sent from the Xperience controller to the Digital Signage player. Vice versa, actuators such as LED and audio switches can be easily controlled by sending API commands from the Digital Signage player to the Xperience controller.

All API commands are sent via serial communication. Both controllers with RS-232 serial interfacing as well as Serial-over-USB are available.

XN-RANGE | nano Xperience controllers

The Nexmosphere XN range offers Xperience Controllers in a small form factor making it ideal to use when space is limited and integration with other systems is required. Connect your Elements of choice and build a unique shopper journey; LED lighting that starts glowing when a shopper approaches, product info showed if a product is placed on an “info platform”. Whichever interactivity suits your brand’s story, create a lasting impression using the XN Xperience controller.

XN-100 SERIES



The connection method to Nexmosphere’s Elements is called X-talk. Calculate the number of X-talk channels needed by adding up the number of Elements used and pick the right model for the job. Nano controller models that are fitted with a MicroBay or onboard interface, offer an additional connection possibility for specific Elements. The Controllers are equipped with a USB or RS232 interface to integrate the sensor Elements with your connected device.

RS-232 interface X-talk only	USB interface X-talk only	USB interface X-talk & onboard interfacing
XN-180   8x X-talk	XN-135   2x X-talk XN-185   8x X-talk	XN-135M3   2x X-talk, 1x Presence interf. XN-135M8   2x X-talk, 1x X-Wave interf. XN-165   2x X-talk, 1x 4 button interf.

XN-RANGE ACCESSORIES



The Nexmosphere Nano range is complemented with the cables needed for communication and power supply. When using XN models with a USB interface, the USB port of the connected device also provides power to the Nexmosphere controller. Most USB ports supply enough power to the Elements without the need for additional power, except when connecting LEDs. When using LEDs consider the use of the USB split cable together with a power supply to provide enough power or consult us for advice. When using the XN models with a serial connection, the use of a power supply is always required.

USB cables	Power supplies
CA-UM4B   Micro-USB cable, 60cm CA-UM6B   Micro-USB cable, 180cm CA-US5B   Micro-USB split cable	PU-0520EU   EU, 5VDC/2A, USB PU-0520US   US, 5VDC/2A, USB
Serial cables	
CA-JJ9B   Jack 3.5 to Jack 3.5 CA-JD9B   Jack 3.5 to Sub-D9	



XC-RANGE | compact Xperience controllers

The Nexmosphere XC range offers Xperience Controllers in a compact form factor while offering various onboard functionalities. Choose the right controller series based on the functionality needed, whether this is controlling multiple RGBW LED strips, pixel LED strips or (optical) audio switching. Combine this with Elements connected onto the X-talk channels to build your own unique experience.

XC-700 SERIES



The 700 series is equipped with X-wave interfaces which allow connecting flexible pixel LED strips. X-Wave LED technology allows the user to select one of the numerous pre-programmed animation patterns and modify its parameters to fit the exact application, whether it's a gentle soft glow or a complex running light.

X-Wave control  
X-Talk interface  
USB API interface

XC-720	2x X-Wave interface, 4x X-talk
XC-741	4x X-Wave interface, 8x X-talk
XC-748	4x X-Wave interface, 4x X-talk, 2x RGBW LED output
XC-760	6x X-Wave interface, 4x X-talk

new product  
consult timing and availability

XC-800 SERIES



The 800 series is equipped with fully dimmable RGBW LED outputs which allow connecting 12/24V LED strips. Transition smoothly between different colors and create just the right atmosphere with subtle lighting use in tailored RGBW LED colors.

RGBW LED output  
X-Talk interface  
USB API interface

XC-820	2x RGBW LED output, 4x X-talk
XC-841	4x RGBW LED output, 8x X-talk
XC-848	4x RGBW LED output, 4x X-talk, 2x X-Wave interface
XC-860	6x RGBW LED output, 4x X-talk

XC-RANGE | compact Xperience controllers

XC-900 SERIES



The 900 series is equipped with audio switches to facilitate easy and seamless switching of an incoming audio stream from one speaker, soundbar or headphone to another. Both analog switches (3.5mm jack plug) and optical switches (Mini-Toslink) are available.

Audio switching  
X-Talk interface  
USB API interface

XC-931	4x optical switch, 8x X-talk
XC-937	4x optical switch, 4x X-talk, 2x X-Wave interface
XC-938	4x optical switch, 4x X-talk, 2x RGBW LED output

XC-941	4x analog switch, 8x X-talk
XC-947	4x optical switch, 4x X-talk, 2x X-Wave interface
XC-948	4x analog switch, 4x X-talk, 2x RGBW LED output

new product  
consult timing and availability

XC-RANGE ACCESSORIES



The Nexmosphere Compact range is complemented with the cables needed for communication and power supply. The Compact range controllers require a USB cable for communication and a power supply. Calculate the power consumption of the complete system or consult us for advice to pick the right power supply for your project.

Power supplies

PS-1220EU	EU, 12VDC/2A, 2.1mm
PS-1220US	US, 12VDC/2A, 2.1mm
PS-1250EU	EU, 12VDC/5A, 2.1mm
PS-1250US	US, 12VDC/5A, 2.1mm
PS-2425EU	EU, 24VDC/2.5A, 2.1mm
PS-2425US	US, 24VDC/2.5A, 2.1mm
PS-2438EU	EU, 24VDC/3.75A, 2.1mm
PS-2438US	US, 24VDC/3.75A, 2.1mm

USB cables

CA-UM4B	Micro-USB cable, 60cm
CA-UM6B	Micro-USB cable, 180cm

XM-RANGE | modular Xperience controllers

The Nexmosphere XM range offers Xperience Controllers in an configurable and extendable form factor making it ideal to use when functionality combinations which aren't available in the smaller ranges are required. This series consists of XM controllers and EM extension units, which are mounted together at our production facilities in order to offer you just the right functionality set for your project.

XM CONTROLLERS



The Modular controllers are fitted with 1 X-talk channel on the unit itself and can support up to 5 Extension Modules and 8 Shop Modules. The Controllers are equipped with a USB or RS232 interface to integrate the sensor Elements with your connected device via our API.

Modular architecture  
API interfacing

XM-350	RS-232 API interfacing
XM-370	USB API interfacing

EXTENSION MODULES



The EM modules define the exact specification of the complete XM Xperience controller. Combine any of the modules into one system to make it fit the exact application needs. Different functionalities such as LED control, audio switching or large numbers of Element connections through X-talk channels can all be combined on a single XM controller. The EM modules are pre-assembled onto the XM controllers at our production facilities.

Modular architecture  
Audio switching

EM-1	1x audio input
EM-4	4x audio switching
EM-30	1x optical input
EM-34	4x optical switching

Modular architecture  
Wireless X-talk

EM-F1	1x wireless X-talk
EM-F4	4x wireless X-talk
EM-F8	8x wireless X-talk

Modular architecture  
LED control

EM-2	1x RGB LED output
EM-5	5x mono LED output
EM-6	5x RGB LED output

Modular architecture  
X-talk

EM-7	4x X-talk
EM-8	8x X-talk

XM-RANGE | modular Xperience controllers

SHOP MODULES



Shopbus Modules are specifically designed for two reasons; firstly, creating large systems where more interfaces are needed than one XM controller with connected EM modules can provide. And secondly; allowing large interspacing between several control units, when Elements are needed far apart from each other. The Shopbus architecture enables connecting multiple XM-like controller units together, with the possibility of using long cable lengths between the units. All the while, the interfacing towards the connected device can still take place through one serial communication connection.

X-talk

SM-100	8x X-talk
SM-200	16x X-talk
SM-300	24x X-talk
SM-400	32x X-talk
SM-500	40x X-talk
SM-600	48x X-talk

X-talk  
LED control

SM-110	8x X-talk, 5x mono LED output
SM-115	8x X-talk, 5x RGB LED
SM-120	8x X-talk, 10x mono LED output
SM-125	8x X-talk, 10x RGB LED

XM-RANGE ACCESSORIES



The Nexmosphere Modular range is complemented with the cables needed for communication and power supply. The XM controllers require a serial connection cable and a power supply. Depending on the Elements connected to the EM modules, additional power supplies might be required on individual EM modules. When using Shopbus modules, Shopbus cables are required between the units. Calculate the power consumption of the complete system or consult us for advice to pick the right power supply for your project.

Serial cables

CA-9J9B	RJ-9 to Jack 3.5mm
CA-9D9B	RJ-9 to Sub-D9
CA-9U9B	RJ-9 to USB

USB cables

CA-UM4B	Micro-USB cable, 60cm
CA-UM6B	Micro-USB cable, 180cm

ShopBus cables

CAS-N9R	200cm, red (power)
CAS-N9B	200cm, black
CAS-NDB	10m, black
CAS-NHB	25m, black

Power supplies (5V, XM controller)

PS-0520EU	EU, 5VDC/2A, 2.5mm
PS-0520US	US, 5VDC/2A, 2.5mm
PS-0550EU	EU, 5VDC/5A, 2.5mm
PS-0550US	US, 5VDC/5A, 2.5mm

Power supplies (12-24V, LED modules)

PS-1220EU	EU, 12VDC/2A, 2.1mm
PS-1220US	US, 12VDC/2A, 2.1mm
PS-1250EU	EU, 12VDC/5A, 2.1mm
PS-1250US	US, 12VDC/5A, 2.1mm
PS-2425EU	EU, 24VDC/2.5A, 2.1mm
PS-2425US	US, 24VDC/2.5A, 2.1mm
PS-2438EU	EU, 24VDC/3.75A, 2.1mm
PS-2438US	US, 24VDC/3.75A, 2.1mm