



**SMALL BANDS
HOUSE OF WORSHIP
EDUCATION
RESTAURANTS
RETAIL STORES
COURTROOMS
HOSPITALITY
BARS & CLUBS
AUDITORIUMS
SPORTS FIELDS
BOARDROOMS**

**Professional
Audio System
Solutions**

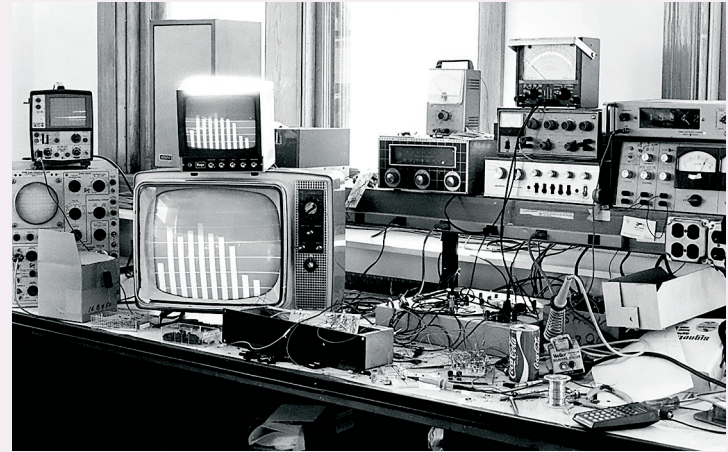
Spring~Fall 2019

**DSP AND
CONTROL
SOFTWARE
DIGITAL
MIXERS
POWER
AMPLIFIERS
DSP MATRIX,
SYSTEM AND
LOUDSPEAKER
PROCESSORS
REMOTES
DSP MIXER-
AMPLIFIERS**

www.ashly.com

Ashly Audio was founded in 1974 by Billy Thompson, a maverick engineer who inspired a group of friends to redirect their talents for sound engineering toward the manufacturing of durable, affordable, and above-all innovative pro audio.

Ashly was quick to recognize early on



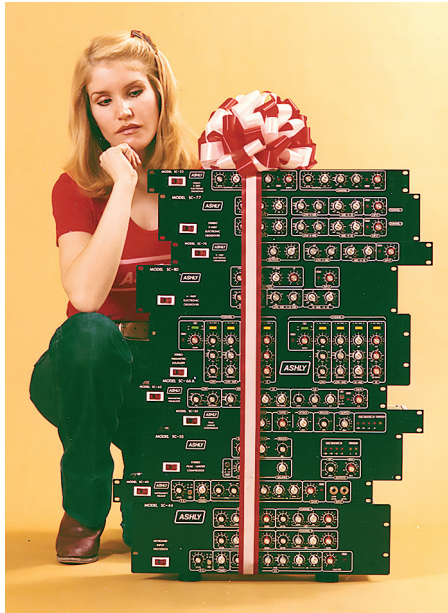
that there was much more to sound quality than standardized coding and fancy filtering algorithms.

It was Thompson's passion for designing and building these components, his commitment to focusing on functionality, musicality — and most of all reliability — that cemented Ashly's enduring legacy in live sound and fixed system

installation markets for decades to follow.

Ashly's power amplifiers and signal processors interconnect with the digital world — seamlessly integrating into a facility's framework without losing the natural "musical" quality of the audio. Ashly provides a selection of pro audio products with features to meet very specific audio needs without losing sound quality.

Moreover, we zealously



More Power To You

FET-1000, FET-1500, FET-2000. Introducing the latest series of professional power amplifiers from Ashly, featuring more models, with more power, than ever before. From movie theaters featuring the sonic excellence of Lucasfilm's THX™ sound reproduction systems to outdoor stadium events covering well over 80,000 satisfied audio enthusiasts, Ashly amplifiers have developed a solid reputation for rock steady performance and near-perfect reliability. And now that legendary Ashly power advantage is available in even more configurations to meet the needs of any amplification situation.

Ashly amplifiers utilize Power MOS-FET Technology to achieve superior overload and square wave response, with no ringing or unwanted transients that degrade program material. Ashly amplifiers are stable into virtually any load and deliver full output even under the most demanding circumstances. Unrestrained, uncolored sound reproduction with remarkable accuracy is assured by choosing Ashly for all your power needs. All Ashly amplifiers are now backed by our exclusive **Five Year Worry-Free Warranty**.

RATING
ASHLY'S
FET SERIES

MODEL	PER-CHANNEL WATTS STEREO	TOTAL WATTS MONO-BRIDGED	5 YEAR WARRANTY
FET-2000	400	800	
FET-1500	300	600	
FET-1000	150	300	

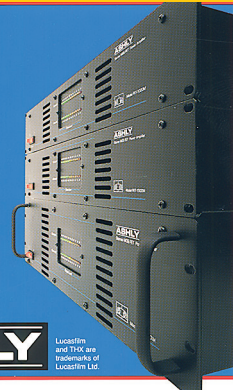
EIA Specification

UL LISTED 3SE5
COMMERCIAL
SOUND EQUIPMENT

Ashly Audio Inc. 100 Fernwood Ave., Rochester, NY 14621
Toll Free (800) 828-8308 In NYS (716) 544-5191
In Canada: Gerraudio Dist. 363 Adelaide St. E. Toronto, M5A 1N3 (416) 361-1667

ASHLY

Lucasfilm
and THX are
Trademarks of
Lucasfilm Ltd.



support our products before and after the sale. It's what sets us apart.

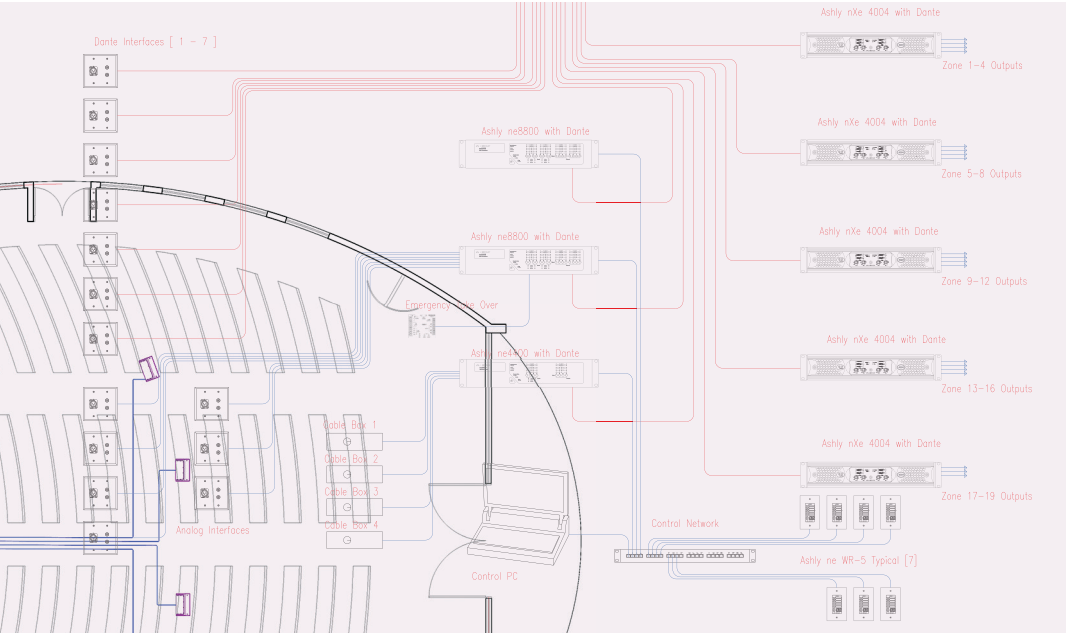
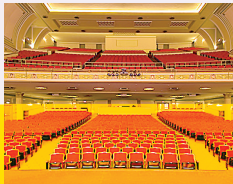
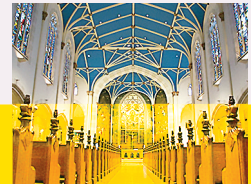
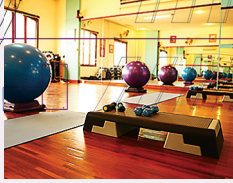
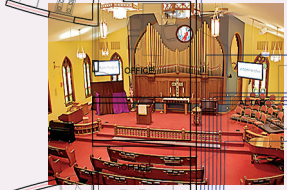
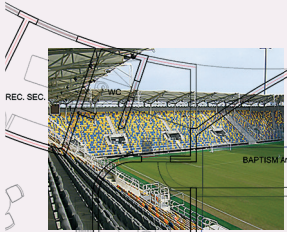
Our legacy began with the power of live performance — but continues as we offer quality audio tools for commercial venues as well.

Download PDF Spec Sheets, Software, Applications Notes and much more at Ashly.

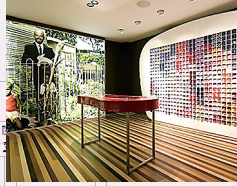




Dante Interfaces [1 - 7]



SMALL BANDS
HOUSE OF WORSHIP
EDUCATION
RESTAURANTS
RETAIL STORES
COURTROOMS
HOSPITALITY
BARS & CLUBS
AUDITORIUMS
SPORTS FIELDS



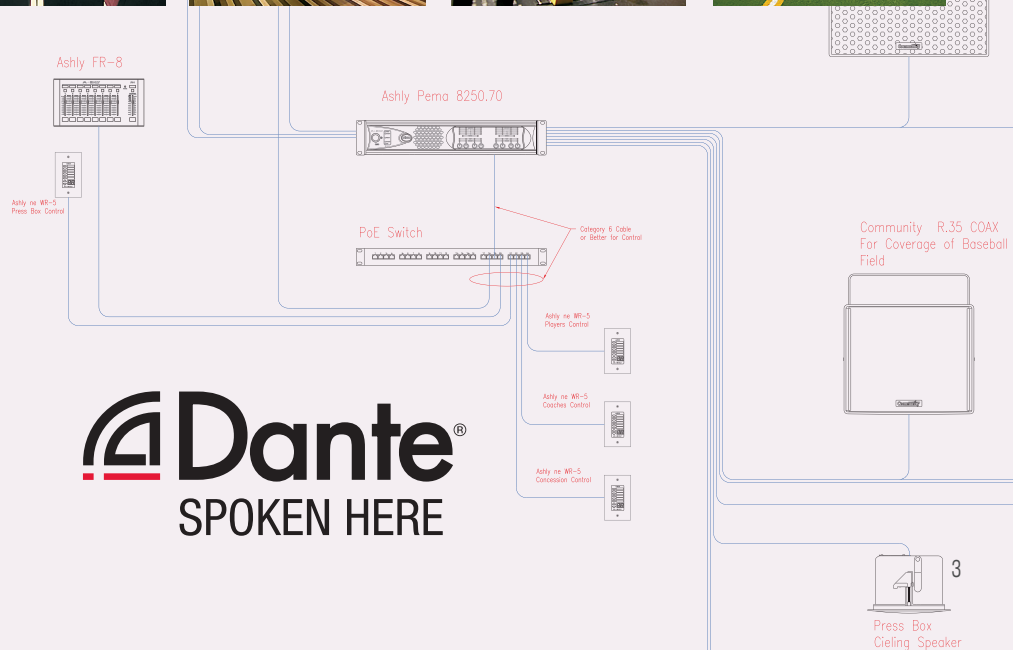
Behind

In most system scenarios, you shouldn't need an expensive matrix to achieve a great sounding facility.

Ashly's "room-centric" system design enables you to assess the challenges and requirements of each room independently, then customize a network of "nodes" that always stay in sync.

This approach to system design allows for cleaner installs and better flexibility in the long term. Because Ashly manufactures hardware that is built to last and software that is easy to implement, your clients will enjoy sound clarity and systems that are easy to manage... all while keeping your business profitable.

Let us work with you as your design partner, from the blueprint stages, to design, to hardware, simply give us a call. Ashly has you covered.



Dante[®]

SPOKEN HERE

Prôtea™ dsp software suite for Windows®

MADE IN THE USA



Audio professionals find our software very intuitive and easy to navigate—and you will too.

No need to attend a one-week training class away from home to learn our software. Common sense layout of controls and features, on-line help, or a visit to the Technical Support page on our website provides answers to all of your questions.

The Prôtea Software Suite includes Prôtea™ Network-Enabled Software (PneS) for Ashly networked devices, and Prôtea™ System Software (PSS) for our legacy non-networked products.

Prôtea is compatible with Microsoft® Windows 10, 8, 7, 32 & 64 bit systems.

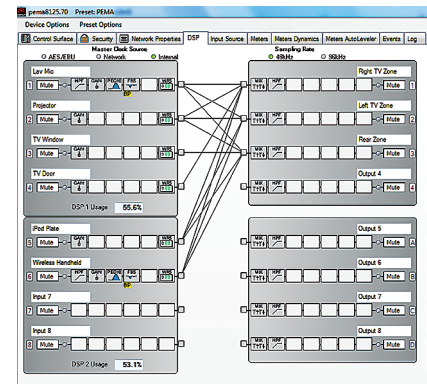
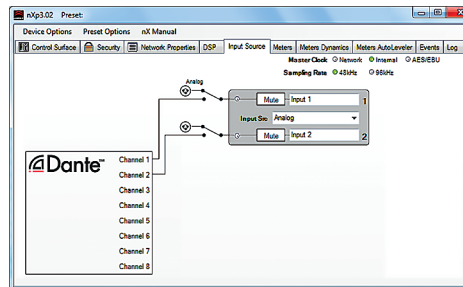


Ashly Net•Work•Able sound systems allow you to use your computer and address a problem from any network location. Your clients will appreciate the instant response and lower long-term ownership costs of their pro audio system.

- Mic preamp
- Signal Generator
- Input Gain
- Output Gain
- Polarity Select
- Clip (Brick Wall) Limiter
- Compressor
- Gate
- Autoleveler
- Ducker
- Ambient Noise Compensation
- Feedback Suppressor
- EQ - FIR Filter
- EQ - 31-band
- EQ - Parametric
- EQ - High/Low Shelf
- EQ - All Pass
- EQ - Variable Q HP/LP
- EQ - Notch Filter
- EQ - Band Pass
- Crossover
- Auto Mixer
- Direct Remote Preset Control
- DC / Network Remote Control
- Dante®, CobraNet and AES3 options

Prôtea™ Software Suite is designed for the nX Family of Amplifiers, Pema, ne Series Amplifiers and Processors, ne24.24M Matrix Processor, and Prôtea Processors.

Not all of the features at left are available on all Ashly power amplifiers or processors. Visit our website for complete listing.



MADE IN THE USA

Ashly Remote

control software for iPad®



Create custom control of your Ashly products to fit a specific installation — all from one place. Add components specific to your system by designing menu systems, faders with text labels, toggles, as well as visual elements like your client's logo and/or background images that fit a certain theme.

Robust and flexible, Ashly Remote lets you to import individual pages from previous designs to create new ones; security features can also be activated and saved within your design for the final interface.

Choose from a variety of control functions

- Design a custom remote interface for Apple iPad®
- Create, save, load and share custom remotes
- Import client graphics as backgrounds
- Secure the iPad by configuring edit or access security
- Control parameters in Networked Ashly products
- Use diagnostics to view communication viability

along with read-back labels for displaying status during use: preset recall, gain/attenuation control, mute control, AB source select, logic output, meter filter level of PEQ, and amplifier standby.

When your design is complete, name and save your client's interface via iTunes.



Performance Venues



Business / Municipal



Restaurants / Retail



Convention Centers



Worship Spaces



Sports Facilities

mXa-1502

Mixer-amplifier



4-zones

2 x 150W amps

New Ashly AquaControl™ Software

- 8-balanced Mic/Line Inputs
- Precision Class A mic preamp design with 48V phantom power
- 4 RCA-type Stereo Line Inputs
- 4 Outputs
- 2 x 150W Class D Amplifiers with selectable Multi-mode operation (2/4/8 Ohm + 25/70/100V)
- Bridgable to deliver single-channel power of 300W at 4 or 8 ohms
- Switch-mode power supply with active Power Factor Correction (PFC) auto-detects 100 - 240VAC mains and operates from 70 - 270VAC

■ *New, advanced Ashly AquaControl software allows easy and convenient access from many browser-based devices. It's managed by an internal web-server and database, and controlled by a networked PC or tablet device, eliminating the need for a separate software application to be installed on a PC or other device*

- Comprehensive DSP on 12 Input and 4 output channels
- Four convenient front-panel buttons for Source/Presets select
- Works with new WR-1.1 remote as well as WR-1, WR-2, WR-5
- Defeatable sleep mode
- Generous integration I/O, including: Network, Serial, GPIO, VC, Standby & Fault
- Compact 1U design reduces rack space requirements

The new **mXa-1502** gives your customers multi-zone music distribution, paging, sound-masking and automatic mixing for a wide-range of environments.

Process twelve audio inputs into four different areas of a church, restaurant, school or office/warehouse complex, etc., with a single rack space device that includes two Ashly-reliable 150-watt amplifiers capable of driving 2, 4 and 8-ohm as well as 25, 70 and 100V loads.

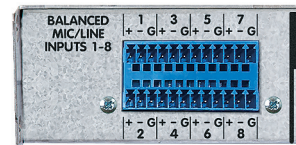
Our studio-quality, Class A mic preamps with phantom power and four stereo inputs for A/V equipment. And a rich compliment of digital signal processing, including routing, auto-mixing, ducking, amplifier monitoring, event scheduling/triggering and more.

All through an easy-to-use GUI that doesn't require a week of tutorials to understand and configure. The most intuitive interface ever, Ashly AquaControl software, lets you and

your customers navigate using virtually any browser-enabled device. Trouble-shoot or re-configure it without having to travel to the client location.

The mXa-1502 provides total control over four zones: church sanctuary, balcony fill, crying room and foyer. Or restaurant bar, main dining room, patio and waiting area. Or reception, offices, conference room and warehouse.

And those are just a few of the space-saving solutions that you can provide your customers with the mXa-1502.





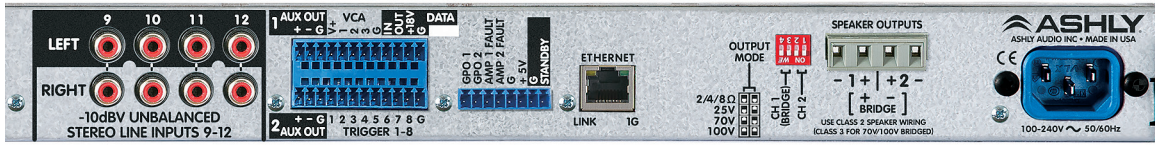
AquaControl™



mXa-1502

Mixer-amplifier

DSP Mixer-Amplifier



4-zones
2 x 150W amps

New Ashly
AquaControl™
Software

New AquaControl™ Software *built into* the mXa-1502. No software to install on a separate PC. Troubleshoot & reconfigure without leaving your office!

To your customers, AquaControl™ means being able to use any browser-enabled hardware: Android® tablets and laptops, iOS tablets and OS10 laptops, Windows® Surface™ Pro's — even Linux boxes.

To you, it means no software to install, no separate on-site computer host and trouble-shooting and reconfiguring from your office

■ **6 user-assignable Input DSP blocks:**

- Parametric and 31-band graphic equalizers, Feedback Control, Signal Generator, etc.
- 6 Dynamics functions including compressor, Auto-Leveler, Gate, Clip, Ducker and Ambient Noise Compensation
- 4 Assignable Mixers, each with Matrixing, Automixing and Ducker
- Scheduler and RTC (Real-Time Clock) allows user-defined automatic, timed activation of various operations. Scheduler can be user-programmed for various timed operations, such as: Power-on/Standby, Preset Recall,

Sub-preset Recall, Source Select, Channel Mute/Unmute and Channel Gain Adjustment (±)

- 6 user-assignable Output DSP blocks
- Event Scheduler
- Event Logs and Reports
- Windows® OS 7, 8, 8.1, 10; Mac® OS 10 and Linux compatibility
- Works with Chrome for Windows®, OS X, iOS, Android®; Safari for OS X; Edge for Windows®



digiMIX™18

digital mixer



18-in /12-out
16 mic preamps
motorized fader



- Precision Alps® motorized 100mm fader
- 7" color LCD capacitive touchscreen for graphical viewing, assign, and setup
- EZ-Mode for secure, simplified touchscreen or iPad® control with EZ-Mode mixer
- 16 discrete Class A microphone preamps with dedicated trim controls, +48V phantom power, phase invert
- Gain-sharing automixer
- Assignable cross-fader
- Ships as desktop console, rack rails included

- 2 line-level inputs
- TRS inserts on channels 1-8
- 6 DCA for fader or mute groups
- 2 internal stereo FX with fully editable reverbs, delay with tap tempo, tremolo, flange, and chorus
- Dedicated Pan control
- High resolution delay (0.2mS) on every input, AUX, or FX
- Expander/noise gate on every input and FX channel
- Compressor/limiter on every input, output, and FX channel
- 4-band parametric/shelving EQ filters plus HPF/LPF on every input, output and FX channel
- 31-band Graphic EQ on Main, and AUX Outputs
- Solo/PFL on every Input, Output, AUX, or FX
- Stereo main outputs on XLR and phone jack with



- dedicated level control
- Headphone and control room outputs with dedicated level controls
- User presets for DSP channel, GEQ, FX, or scene

- settings, plus channel copy function
- Safety/compliance: cTUVus, FCC, RoHS, CE



*iPad not included



The digiMIX18 Digital Mixing Console gives you complete control over your performance space. Light and portable, it's easy to transport or store away. Perfect for mixing live bands, a high school musical, a worship service, or recording in a project studio.



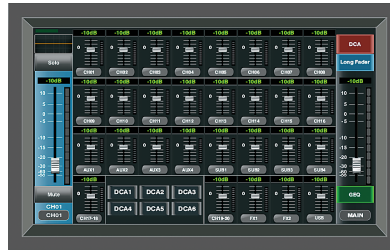
digiMIX18 is the only direct drop-in, 16-preamp digital replacement for the CR1604-VLZ, Soundcraft Signature 16, Yamaha MC16, or Allen & Heath Mix Wizard™ 16

of a responsive touchscreen, optional digital interfacing, and companion Apple iPad® App.

Together, it's the ideal mixing experience.

With 18 inputs + 8 AUX channels and 6x DCA fader groups, you have the flexibility to accommodate instruments, voices and signals from various sources.

Also equipped with Ashly's renowned Class-A mic pre's, the digiMIX18 can handle the most intense live inputs and screaming vocalists.



7" Touchscreen adds depth to control.

Combined with the Live Control Surface, use the touchscreen to navigate sub menus and toggle to various settings quickly and intuitively.



Live Motorized Fader & Intelligent Meter Bridge shows all signal levels.

Select any channel to assign the Live Motorized Fader to an individual channel.



EZ-Mode for the non-technical user

in fixed installations such as restaurants or boardrooms. Programmers can offer a very simple control interface that clients can easily understand, while password-protecting more advanced controls.



Add a Dante® interface for network audio capability.

With a Dante-3018 interface, assign one or more channels of network audio to receive and integrate audio with any endpoint in the system. With our Dante card installed, 18 digital "inserts" are available to access external DAW-based processing across inputs.

digiMIX™ 24

digital mixer



24-in /14-out
16 mic preamps
motorized fader



- Precision Alps® motorized 100mm fader
- 7" color LCD capacitive touchscreen
- EZ-Mode for secure, simplified touchscreen or iPad® control with EZ-Mode mixer
- 16 discrete Class A microphone preamps with dedicated trim controls, +48V phantom power, phase invert
- Gain-sharing automixer
- Assignable cross-fader
- 4 dedicated line-level inputs
- Stereo tape/CD inputs and outputs on RCA connectors
- TRS inserts on channels 1-8

- USB 2-channel Input & Output for connection to PC DAW or media players* track audio stereo record and playback
- 4 AUX sends (linkable for stereo monitors) and 4 subgroup outputs, switchable to 8 AUX sends
- 6 DCA for fader or mute groups
- 2 internal stereo FX with fully editable reverbs, delay with tap tempo, tremolo, flange, and chorus
- Dedicated Pan control
- High resolution delay (0.2mS) on every input, subgroup, AUX, or FX
- Expander/noise gate on every input and FX channel
- Compressor/limiter on every input, subgroup, output, and FX channel
- 4-band parametric/shelving EQ filters plus HPF/LPF on every input, subgroup, output, and FX channel
- 31-band Graphic EQ on Main, AUX, and Sub Outputs
- Solo/PFL on every Input, Output, Subgroup, AUX, or FX

- Stereo main outputs on XLR and phone jack with dedicated level control
- Headphone and control room outputs with dedicated level controls
- User presets for DSP channel, GEQ, FX, or scene settings, plus channel copy function
- Safety/compliance: cTUVus, FCC, RoHS, CE

Available on the
App Store



*iPad not included



The digiMIX24 Digital Mixing Console gives you complete control over your performance space. Light and portable, it's easy to transport or store away, whether you're mixing live bands, a high school musical, a worship service, or recording in a project studio, there are countless applications where digiMIX24 feels right at home.

With its traditional analog feel, the Live Control Surface allows optimum control with real knobs and a live fader when selecting important functions, while offering conveniences of a responsive touchscreen, USB interfacing, and companion Apple iPad® App. Together, it's the ideal mixing experience.

With two performance modes: 24x8 AUX channels, or 24 x 4 AUX Channels + 4 Sub-groups with 6x DCA fader groups, you have the flexibility to accommodate instruments,

voices and signals from various sources.

Also equipped with Ashly's renowned Class-A mic pre's, the digiMIX24 can handle the most intense live inputs and screaming vocalists. Use digiMIX24 as a command center to integrate live performance throughout an entire venue or facility.



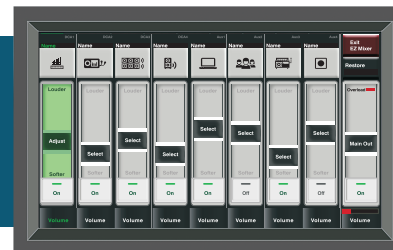
7" Touchscreen adds depth to control.

Combined with the Live Control Surface, use the touchscreen to navigate sub menus and toggle to various settings quickly and intuitively.



Live Motorized Fader & Intelligent Meter Bridge shows all signal levels.

Select any channel to assign the Live Motorized Fader to an individual channel.



EZ-Mode for the non-technical user

in fixed installations such as restaurants or boardrooms. Programmers can offer a very simple control interface that clients can easily understand, while password-protecting more advanced controls.



Add a Dante® interface for network audio capability.

With a Dante-32 interface, assign one or more channels of network audio to receive and integrate audio with any endpoint in the system. With our Dante card installed, 18 digital "inserts" are available to access external DAW-based processing across inputs.

nX

multi-mode

MADE IN THE USA



2 and 4 Channels

75-3000 Watts/ch

12 models

- Rear panel DIP switches select low impedance (2, 4, and 8 Ohm), constant voltage (70V or 100V), high pass filter, limiter and input gain on each channel
- Ashly Energy Management System (EMS) automatic <1W sleep-mode (defeatable) †
- Switch mode power supply automatically detects 100 to 240V AC operation
- Extensive protection circuitry
- Continuously variable cooling fans
- Front panel power switch and level controls (can be disabled for security)
- Multiple internal power supplies provide increased channel separation and reliability
- Remote DC level control on each input channel
- Genuine Neutrik® connectors on 2 RU models for security, safety, and reliability
- Safety / Compliance: cTUVus, CE, FCC, RoHS

Model	Chs.	Watts @ 2Ω	Watts @ 4Ω	Watts @ 8Ω	Bridged @ 4Ω	Watts @ 25V	Watts @ 70V	Watts @ 100V
nX752	2	75	75	75	150	75	75	75
nX754	4	75	75	75	150	75	75	75
nX1502	2	150	150	150	300	150	150	150
nX1504	4	150	150	150	300	150	150	150
nX4002	2	400	400	400	800	—	400	400
nX4004	4	400	400	400	800	—	400	400
nX8002	2	800	800	800	1600	—	800	800
nX8004	4	800	800	800	1600	—	800	800
nX1.52	2	1500	1500	1250	3000	—	1500	1250
nX1.54	4	1500	1500	1250	3000	—	1500	1250
nX3.02	2	3000	2000	1250	6000	—	2450	1250
nX3.04	4	3000	2000	1250	6000	—	2450	1250



Multi-Mode Operation

2 Ohm Stable

Ashly EMS™

Power Factor Correction

5-Year Warranty



nX
multi-mode

Power Amplifiers

2 and 4 Channels
75-3000 Watts
12 models

NX Multi-Mode Amplifiers feature energy-efficient Class-D switching amplifier technology combined with a switch mode power supply. All feature Selectable Outputs on each channel so you can connect to virtually any speaker. Select Low Impedance (2, 4, and 8 Ohm), or Constant Voltage (70V or 100V).

Offered in two and four channels, NX is available in three product families with 36 total two and four-channel models (*nX*, *nXe*, *nXp*), from 3000, 1500, 800, 400, 150 and 75 Watts per channel.

All with common feature sets. These amps are designed to meet the most demanding live sound environments and fixed installation sound systems such as stadiums, arenas, performance venues, worship spaces and convention centers.

Multi-mode operation is standard on all nX amplifiers. Set individual amplifier outputs to drive Low Impedance (2, 4, 8 Ohms), or 25V*, 70V, 100V Constant Voltage systems, via rear-panel located DIP-switches.

Adapt worldwide with a universal switch-

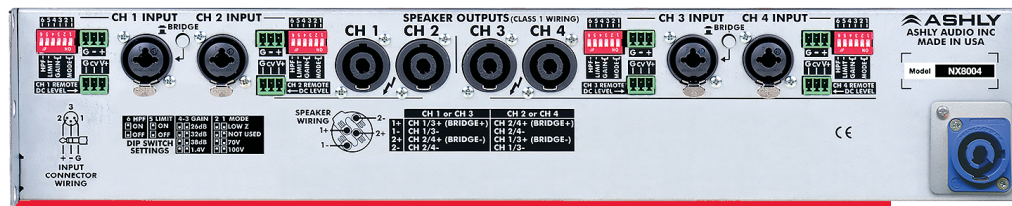
mode power supply with PFC (Power Factor Correction). Reduce power consumption using Ashly EMS™ (Energy Management System) by triggering a sleep mode that draws <1W, which meets the most aggressive Energy Star® benchmark.

The **nXe** Series adds Ethernet control, event scheduler, preset recall, AUX outputs and factory options like Dante® or CobraNet® for network audio integration.

The **nXp** Series has all the features of nXe, adding Protēa™ DSP and swept load impedance analysis.

*25V applies to 150 & 75 Watt models only.

†The <1W sleep mode can be defeated for applications that are subject to third-party performance standards that prohibit a sleep mode, including those used for Mass Notification and Emergency Communications Systems and those subject to ANSI/UL 2572.



nXp multi-mode



MADE IN THE USA



2 and 4 Channels

75-3000 Watts

Ethernet Control

Protēa™ DSP

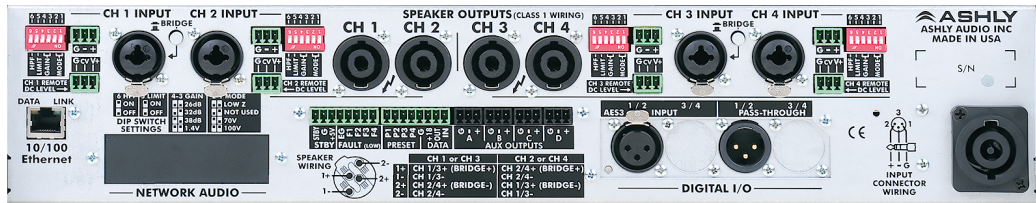
nXp amps have all nX and nXe features plus...

- Protēa™ DSP audio processing on inputs and outputs
- Automatic Feedback-Suppressor
- Auto-Mixer
- Ambient Noise Compensation
- Dynamics processing with auto-ducker
- EQ & crossovers including FIR filters



- Time-alignment & tower delay
- Scheduled noise-masking with Real-Time Clock
- Swept AC load-analysis with baseline logging
- Matrix mixing, Metering and Signal generator function,
- Input Mode select switch: Bridge, Stereo, Parallel

Model	Chs.	Watts @ 2Ω	Watts @ 4Ω	Watts @ 8Ω	Bridged @ 4Ω	Watts @ 25V	Watts @ 70V	Watts @ 100V
nXp752	2	75	75	75	150	75	75	75
nXp754	4	75	75	75	150	75	75	75
nXp1502	2	150	150	150	300	150	150	150
nXp 1504	4	150	150	150	300	150	150	150
nXp4002	2	400	400	400	800	—	400	400
nXp4004	4	400	400	800	800	—	400	400
nXp8002	2	800	800	800	1600	—	800	800
nXp8004	4	800	800	800	1600	—	800	800
nXp1.52	2	1500	1500	1250	3000	—	1500	1250
nXp1.54	4	1500	1500	1250	3000	—	1500	1250
nXp3.02	2	3000	2000	1250	6000	—	2450	1250
nXp3.04	4	3000	2000	1250	6000	—	2450	1250





ne
network enabled

Power Amplifiers

4 and 8 Channels

250 Watts

Ethernet control

Protēa™ DSP



- FIR Filter capable (pe version only)
- 10/100 Ethernet comes standard
- AES3, CobraNet® and Dante® options
- DC voltage remote gain control
- Ethernet remote control and monitoring
- DSP Processing on inputs and outputs (pe only)
- Remote turn on/off

Model	Chs.	Watts @ 4Ω	Watts @ 8Ω	Bridged @ 8Ω	250 W Constant Voltage			Protēa DSP
					25V	70V	100V	
ne4250	4	250	150	500	ne4250.25	ne4250.70	ne4250.10	—
ne8250	8	250	150	500	ne8250.25	ne8250.70	ne8250.10	—
ne4250pe	4	250	150	500	ne4250.25pe	ne4250.70pe	ne4250.10pe	✓
ne8250pe	8	250	150	500	ne8250.25pe	ne8250.70pe	ne8250.10pe	✓

- Switch mode power supply, Class-D output
- Stepped, calibrated input attenuators
- Disable all front panel controls via software
- Temperature-sensitive variable speed fan with side-to-front airflow
- Selectable HPF frequencies on 25V, 70V and 100V models
- 4-stage level meters
- Output current / temp indicators
- Low Impedance, 25V, 70V, 100V models
- Safety/Compliance: cTUV_{us}, CE, FCC, RoHS

Designed around an energy efficient Class-D platform with switching power supply, NE amps offer ease of use, setup and control using standard 10/100 Ethernet protocol and Protea™ NE Software with no special outboard control units needed.

Choose either 4 or 8-channel packages rated at 250W per channel, with separate low impedance or constant voltage models.

Each can be customized for any installation by adding your choice of AES3 inputs, Dante®, CobraNet®, or 4-channel mic preamp card.



5-Year Warranty

nXe multi-mode



MADE IN THE USA



2 and 4 Channels
75-3000 Watts
Ethernet Control

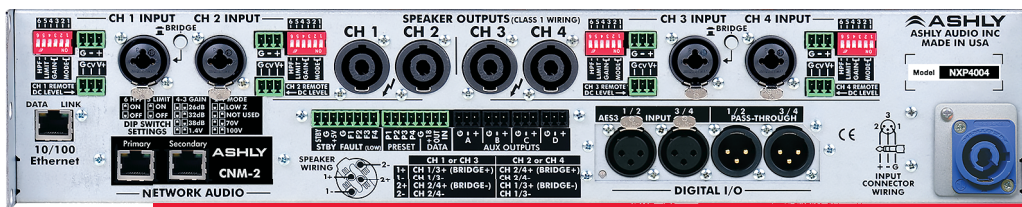


nXe added features:

- Ethernet Control and monitoring of amplifier functions, with front panel COM activity LED
- Serial data port for use with Ashly remote control devices, or optional RS-232 converter for third party controllers (INA-1)
- Use Protēa™ Software to remotely disable all front panel controls, including the on/off switch, for a tamper-proof installation

- Real-Time Clock with Event Scheduler
- Instant Standby Mode 30% reduction in power consumption with on/off and Preset Recall, both via contact closure, software control, or event scheduler
- Programmable power-on delay
- Aux preamp outputs, and fault condition logic outputs
- Optional Cobranet™ or Dante® and AES3 digital audio input with pass-thru

Model	Chs.	Watts @ 2Ω	Watts @ 4Ω	Watts @ 8Ω	Bridged @ 4Ω	Watts @ 25V	Watts @ 70V	Watts @ 100V
nXe752	2	75	75	75	150	75	75	75
nXe754	4	75	75	75	150	75	75	75
nXe1502	2	150	150	150	300	150	150	150
nXe1504	4	150	150	150	300	150	150	150
nXe4002	2	400	400	400	800	—	400	400
nXe4004	4	400	400	400	800	—	400	400
nXe8002	2	800	800	800	1600	—	800	800
nXe8004	4	800	800	800	1600	—	800	800
nXe1.52	2	1500	1500	1250	3000	—	1500	1250
nXe1.54	4	1500	1500	1250	3000	—	1500	1250
nXe3.02	2	3000	2000	1250	6000	—	2450	1250
nX3e.04	4	3000	2000	1250	6000	—	2450	1250





pêma

Protêa media amps

Power Amplifiers

4 and 8 Channels
125 and 250 Watts
Ethernet control

Protêa™ DSP

Model	Chs.	Watts @ 4Ω	Watts @ 8Ω	Bridged @ 8Ω	25V	Constant Voltage 70V	100V	Protêa DSP
pêma 4125	4	125	150W	500W	pêma4125.25	pêma4125.70	pêma4125.10	✓
pêma 4250	4	250W	150W	500W	pêma4250.25	pêma4250.70	pêma4250.10	✓
pêma 8125	8	125W	150W	500W	pêma8125.25	pêma8125.70	pêma8125.10	✓
pêma 8250	8	250W	150W	500W	pêma8150.25	pêma8250.70	pêma8250.10	✓

Pêma is a restaurant or retail system with ambient noise control, automatic feedback suppression, event scheduling, a dedicated TEL/PBX input, dual RCA inputs and paging microphone inputs.

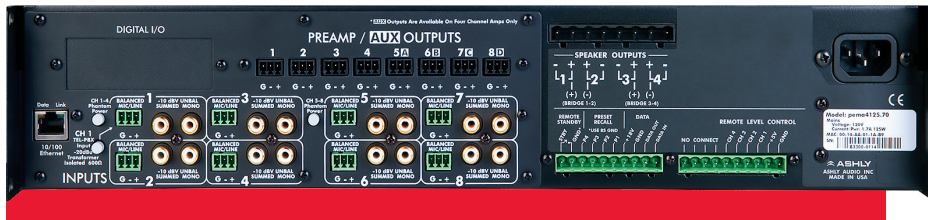
It's a liturgical church-in-a-box with gain sharing automatic microphone mixing, auto

feedback suppression and a maximum of 8 wired or wireless microphone inputs. For courtroom projects, a single Pêma offers amplification, an auto mixer, auto feedback suppression, AUX outputs for recording and a built-in pink noise generator for masking sidebar discussions.

- FIR Filter capable
- Dante® and CobraNet® options fully supported
- 8-in x 8-out sophisticated matrix mixing
- 8 built-in mic preamps
- Dual RCA and balanced Euroblock inputs
- Dedicated telephone/PBX input
- Post DSP AUX line level outputs
- Stereo sum to mono
- Adjustable HP/LP filters

Dante®

- Event scheduling and real-time clock
- Gain sharing automatic microphone mixer
- Automatic feedback suppression
- Ambient noise compensation
- Built-in pink/white noise and sine wave generator
- Intuitive wall remote options
- Safety/Compliance: cTUVus, CE, FCC, RoHS



KLR

high-performance



2 Channels
1000-2500 Watts



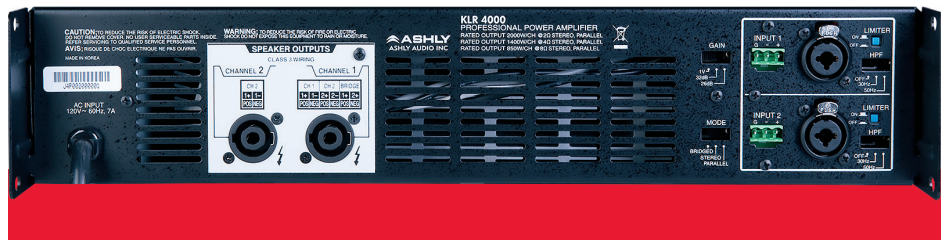
- Optimized to deliver high levels of sustained power
- 2 RU configuration
- Stable down to 2 Ohms
- KLR-3200 offers 70V operation
- Balanced inputs via 3-pin Euroblock
- Combo XLR/TRS connectors
- Neutrik® speakON® output connectors
- Switchable 30Hz/60Hz/Off High-Pass Filter per channel"
- Selectable Amp Gain (32dB, 26dB, 1V) per channel
- Input Mode select switch: Bridge, Stereo, Parallel

- Switch-mode power supply with extensive protection circuitry
- On/Off limiter switch per channel
- Forced-air cooled (front-in, rear-out)
- Removable, easy-to-clean dust filters
- Front-mounted attenuators
- Removable amp handles for permanent installation
- Optional locking front panel volume knobs
- Safety/Compliance: cCSAus, CE, FCC, RoHS
- KLR-2000 output topology: Class-AB;
KLR-3200, 4000, and 5000 output topology: 2-step Class-H design

Model	Ch.	Watts @ 2Ω	Watts @ 4Ω	Watts @ 8Ω	Bridged @ 4Ω	Constant Voltage Options
KLR-5000	2	2500	1700	1000	5000	—
KLR-4000	2	2000	1400	850	4000	—
KLR-3200	2	1600	1100	650	3200	800 @ 70V
KLR-2000	2	1000	600	350	2000	—

Our KLR Series high-efficiency, high-power amplifiers are the ideal choice for high-output speaker systems, line arrays, dual 18" subwoofers and much more. If you think you need to use an expensive, European amplifier to get a clean, stable, quiet amplifier—think again.

KLRs are quiet, with signal-to-noise ratio ratings from >108 dB to >110 dB across all models. Each with a 3-position gain switch for both channels, a 3-position mode switch (bridged, stereo or parallel mono) and a 3-position 12dB/oct HPF switch (30Hz, 50Hz or off).





SRA

convection-cooled

Power Amplifiers

Model	Channels	Watts @ 4Ω	@ 8Ω	@ 8Ω Bridged	Constant Voltage
SRA-2075	2	75	40	150	—
SRA-2150	2	150	80	300	✓
SRA-4075	4	75	40	150	—
SRA-4150	4	150	80	300	✓

SRA Convection-Cooled Amplifiers are advanced, efficient single-space amplifiers perfect for installations with modest power requirements. The SRA Series makes it a snap to get exactly what you need and nothing you don't.

Housed in compact single rack space chassis and weighing only 10 lbs, SRA Convection-Cooled Amplifiers are designed to drive 4 or 8-ohm loads. Choose from 4 models available in 2 and 4-channel configurations

with power ratings of 75W and 150W per channel.

The 150W models are capable of driving 25V constant voltage lines directly. Switch mode power supplies and Class-D amplifier circuitry provide an extremely power efficient solution. They are convection cooled, so little maintenance is needed after the installation, and no annoying fan noise. Of course you get the reliability, sonic quality and rugged construction you've come to expect from Ashly.

- Convection-cooled for silent operation
- Extensive protection circuitry including output overcurrent protection, DC output protection, main supply rail overvoltage protection, internal chassis temperature monitoring, in-rush limiting and mains fuse
- Level attenuators with level control
- Signal present and clip alert status LEDs
- 2-channel versions have a stereo headphone jack

2 and 4 Channels
75 and 150 Watts

- 80 Hz/ Off High Pass Filter
- Rear panel Gain Switch: +36 dB or +26dB input sensitivity
- Euroblock inputs/outputs
- Normal or bridged mode switch on each channel
- Remote power turn ON/OFF
- Adjustable turn-on delay up to 7.5 seconds
- Safety/Compliance: cTUV us, CE, FCC, RoHS
- 5-Year Warranty



TRA

convection-cooled



Multi-mode 2 and 4 Channels. 75 and 150 Watts

- Convection cooling
- 2 RU configuration
- Extremely low ambient noise
- Internally-mounted constant voltage transformers
- Extensive protection circuitry including output overcurrent protection, DC output protection, in-rush limiting and mains fuse
- 6-Step signal level and clip LEDs
- Rear panel level attenuators for each channel
- Rear panel Gain Switch: +36 dB or +26dB input sensitivity
- Euroblock inputs/outputs
- Remote stand-by control
- Adjustable turn-on delay up to eight seconds
- Safety/Compliance: cTUV_{US}, CE, FCC, RoHS

Model	Ch	Watts @ 4Ω	Watts @ 8Ω	Bridged @ 8Ω	Constant Voltage		
					25V	70V	100V
TRA-2150	2	150	80	300	150	150	150
TRA-4150	4	150	80	300	150	150	150
TRA-2075	2	75	40	150	75	75	75
TRA-4075	4	75	40	150	75	75	75

TRA Series Amplifiers employ our advanced, efficient amplifiers perfect for Low Impedance, 25V, 70V or 100V installations with modest power requirements. They also feature a switch-mode power supply with Class-D circuitry, providing an extremely power-efficient solution. All TRA Series

amplifiers are convection-cooled, so there's little maintenance after the installation, and no annoying fan noise.

A 6-step LED meter for each channel lets you monitor all levels. TRA amplifiers can drive 4 or 8 Ohm loads and 25V or 70V and 100V Constant Voltage lines simultaneously.



TM

compact mixer-amplifiers



The TM Series of compact tabletop mixer/amplifiers are the products of choice in small restaurants, retail stores, bistros, convenience stores and mini-marts and school classrooms.

The *TM-360 Mixer/Amplifier* is a 3-input, 60W unit that offers input and output flexibility



Like the TM-360, the TM-335 Mixer/Amplifier is a 3-input 35W version. It features your choice of mic, line, dual RCA sum-to-mono or telephone inputs. Rear panel DIP switches set input priorities and trigger for the ducking circuit. Rack mount the TM-335 using the accessory RMK-335.

coupled with energy efficiency.

The TM-360 uses a Class-D amplifier topology for added energy efficiency.

A front panel 3.5mm TRS mini-jack makes it easy to plug-in a back-up music source, such as an MP3 player.

Rear panel DIP switches allow you to select the mix going to each zone.

There are 2 separate zone outputs: a 1W output for driving a remote Zone 2 speaker, and a preamp output that can be used to drive a separate amplifier.

Front panel controls include rotary input level controls, master volume control, Bass and Treble tone controls, and Power LED. Channel LEDs flash when a signal is present.

Rear panel inputs are RCA and Euroblock; outputs are Euroblock. A Low Cut filter is provided for proper paging horn EQ.

TM-360 Features:

- One balanced mic/line/tel input with phantom power, 2 balanced line level inputs w/stereo RCA sum-to-mono inputs
- Mute priority of inputs
- Mini-jack input on front panel disables channel 2-input
- Switches for zone 2 assign, mute priority, low-cut filter, phantom power
- 600 Ohm pre-out for external amplifiers
- Zone 2-output, 1W / 8 Ohms
- Power saving standby mode: audio inactivity or contact closure

3 Input Channels

35 and 60 Watts

TM-335 Features:

- Inputs 1-2-3 are mic/line, 2-3 sum stereo inputs
- Mute priority
- Rear panel switches select stereo summing
- Transformer-isolated output offers low impedance (4 Ohm) or constant voltage (25V or 70V)
- **TM-360 and TM-335**
- Safety/Compliance: cCSA_{US}, CE, FCC, RoHS
- Optional rack kits available

The 230V International version features Low Impedance, 70V or 100V output options.

Protēa™

ne series
dsp system processors



ASHLY
ne8800
8x8 Processor



MADE IN THE USA

Network enabled
Ashly iOS Remote
4 x 4 to 8 x 8



Complimentary to our amplifiers, our Network-Enabled DSP Processors offer easy setup and control using standard 10/100 Ethernet protocol and Protēa™ ne Software.

No special outboard control units are needed. Connecting and controlling an audio processor for networked systems is simplified and call-back-free with our ne Digital Signal Processors.

Model	I/O	Description
ne4400	4 x 4	base 4 x 4 Protēa DSP system processor
ne4400m	4 x 4	ne4400+4-ch mic inputs
ne4400ms	4 x 4	ne4400 + 4-ch mic inputs + 4-chan AES3 outputs
ne4400ds	4 x 4	ne4400 + 4-ch AES3 inputs + 4-chan AES3 outputs
ne4400d	4 x 4	ne4400 + 4-ch AES3 inputs
ne4400s	4 x 4	ne4400 + 4-chan AES3 outputs
ne4800	4 x 8	base 4 x 8 Protēa DSP system processor
ne4800m	4 x 8	ne4400+4-ch mic inputs
ne4800ms	4 x 8	ne4800 + 4-ch mic inputs + 8-chan AES3 outputs
ne4800ds	4 x 8	ne4800 + 4-ch AES3 inputs + 8-chan AES3 outputs
ne4800d	4 x 8	ne4800 + 4-ch AES3 inputs
ne4800s	4 x 8	ne4800 + 8-chan AES3 outputs
ne8800	8 x 8	base 8 x 8 Protēa DSP system processor
ne8800m	8 x 8	ne8800+4-ch mic inputs + 4-ch mic input card
ne8800mm	8 x 8	ne8800+4-ch mic inputs + two 4-ch mic input cards
ne8800ms	8 x 8	ne8800 + 4-ch mic inputs + 8-chan AES3 outputs
ne8800ds	8 x 8	ne8800 + 8-ch AES3 inputs + 8-chan AES3 outputs
ne8800d	8 x 8	ne8800 + 8-ch AES3 inputs only
ne8800s	8 x 8	ne8800 + 8-ch AES3 Outputs only

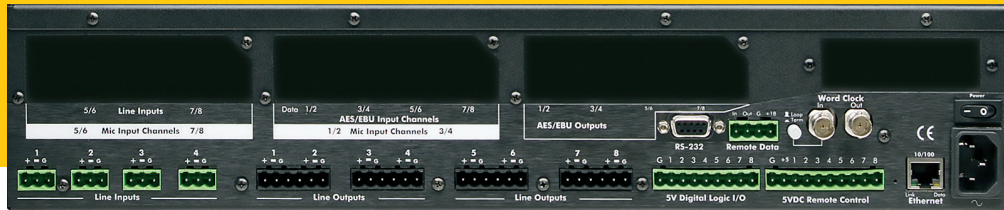
Standard ne DSP units are analog line input/output format of ne4400 (4x4), ne4800 (4x8), and ne8800 (8x8) with four option bays supporting network audio, AES3, and mic input options.

The DSP signal processing library is extensive and utilizes multiple SHARC 32-bit processors with sample rates of either 48KHz or 96KHz.

Processing blocks include either a 4x4, 4x8 or 8x8 matrix mixer, a full array of graphic, parametric and all pass equalization, crossover filters including 8th-order Butterworth, Bessel, Linkwitz-Riley and notched Linkwitz-Riley.

The Protēa™ Software Suite also includes an extremely advanced automatic feedback suppressor, gain sharing automatic microphone mixing, ambient noise sensing and level adjustment, autolevelers, compressors, matrix duckers, limiters, frequency-keyed

Protea™ ne series dsp matrix processors



noise gates, signal delay up to 1,365ms on every channel and your choice of sinewave, pink or white noise generators.

All programming is accomplished using standard 10/100 Ethernet or RS-232 protocol and Protea ne software for Windows®.

- CobraNet®, Dante®, AES3, Mic Input options
- 10/100 Ethernet and RS-232 computer interface standard
- Extensive Protea DSP suite
- Easy and intuitive user interface

- 24-Bit A/D-D/A audio resolution, 32-bit SHARC DSPs, sample rates of 48kHz and 96kHz
- Hot-plug software control
- iPad control via free Ashly Remote app
- Automatic DHCP network IP configuration
- Butterworth, Bessel, Linkwitz-Riley, and Notched-Linkwitz-Riley filters
- FIR filter capability
- Advanced Automatic feedback suppression
- Word Clock input and output
- Euroblock connectors for audio, preset recall, DC remote level control and data in/out
- Remote controls for level, logic I/O and programmable functions
- Third-party control friendly, input and output metering, multi-level security
- Safety/Compliance: cTUV_{us}, CE, FCC, RoHS

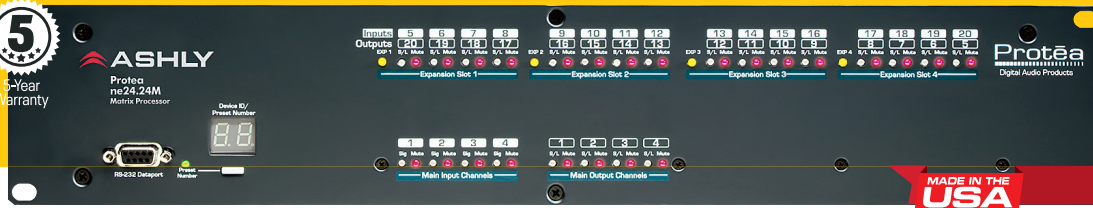


Audio professionals find our Protea™ DSP to be very intuitive and easy to navigate—and you will too. No need to attend a one-week training class away from home to learn our software.

Common sense layout of controls and features, on-line help, or a visit to the Technical Support page on our website provides answers to all of your questions.

Protēa™

ne24.24m series dsp matrix processors



MADE IN THE USA

Network enabled
Ashly iOS Remote

Whether you are designing or installing a system for corporate boardrooms, restaurants, courtrooms, houses of worship, left/center/right high output speaker systems in performance spaces, auditoriums or conference centers, our popular Protēa™ ne24.24M Matrix Processors will more than satisfy your requirements for any zoned system.

When you install needs I/O matrixing with signal processing it doesn't get much easier than programming channels using Protēa™ ne Software on your Windows® PC or laptop.

The ne24.24M uses modular expansion cards to provide up to 24-channels of audio matrixing and processing.

Protēa ne24.24M's base unit offers a 4-input/4-output configuration. Each input and output expansion card has an individual DSP processor allowing you to expand the total input or output 4 channels of DSP processing at a time. These cards are easily installed in the field without the need to reprogram the device.

Matrixing allows you to route any input to any output and control individual levels

I/O	LOGIC CARD
4 x 4	Protēa ne24.24M 4x4 Logic
4 x 8	Protēa ne24.24M 4x8 Logic
4 x 12	Protēa ne24.24M 4x12 Logic
4 x 16	Protēa ne24.24M 4x16 Logic
4 x 20	—
8 x 4	Protēa ne24.24M 8x4 Logic
8 x 8	Protēa ne24.24M 8x8 Logic
8 x 12	Protēa ne24.24M 8x12 Logic
8 x 16	—
12 x 4	Protēa ne24.24M 12x4 Logic
12 x 8	Protēa ne24.24M 12x8 Logic
12 x 12	—
16 x 4	Protēa ne24.24M 16x4 Logic
16 x 8	—
20 x 4	—

once they have been assigned. Fixed path architecture and extensive processing power per channel will reduce the amount of time it takes to set up your system.

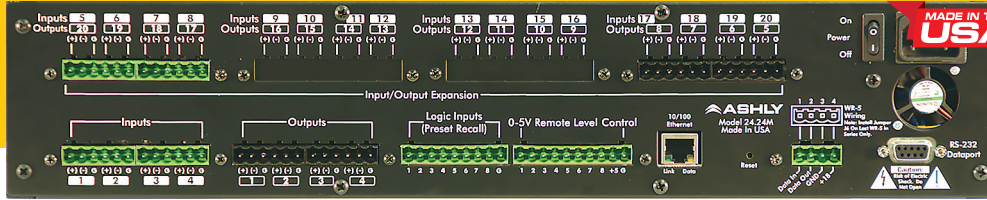
An optional GPO Logic Card allows the ne24.24M to trigger projection screens, curtains or lights. The logic card is installed in place of a 4-input or 4-output card and occupies one of the four expansion slots.

- Factory-installed CobraNet®, Dante®, AES3, Mic Input options
- 10/100 Ethernet and RS-232 computer interface standard
- Extensive Protēa DSP suite with easy and intuitive user interface (see side bar at right)
- 24-Bit A/D-D/A audio resolution, 32-bit SHARC DSPs, sample rates of 48kHz and 96kHz

Protēa™

ne24.24m series

dsp matrix processors



- Up to 24-channels of audio processing
- 4x4 base unit configuration
- Expand inputs or outputs 4-channels per module
- Fixed path architecture DSP control
- iPad control via free Ashly Remote app
- Automatic DHCP network IP configuration
- Modules easily field installable
- Euroblock connectors for audio, preset recall, DC remote level control and data I/O
- 31 preset locations
- Remote controls for level, preset recall and programmable functions
- Third-party control-friendly
- Input and output metering viewable in dBu
- Multi-level security
- Safety/Compliance: cTUVus, FCC, CE, RoHS



Protēa Software for Windows®: The Power Behind the ne24.24m

Audio professionals find our software very intuitive and easy to navigate — and you will, too. Protea Software has common sense layout of controls and features and online help.

Input channel processing blocks include:

- Gain
- Pink Noise Generator
- Delay
- Fifteen PEQ Filters
- Gate
- Autoleveler

Output channel processing blocks include:

- Ducker
- HPF/LPF
- Delay
- Fifteen PEQ Filters
- Gain
- Limiter
- Cross-Point
- Mixer



Protēa™



SP-series dsp loudspeaker processors

3-in / 6-out

4-in / 8-out

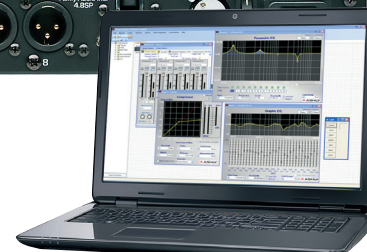
Protēa DSP for PC

- Very intuitive, easy-to-use Front Panel Parameter Control
- Single rack space with XLR audio connections
- Crossover, EQ, delay and limiter functions
- Inputs assignable to any output
- Front panel or PC programming and control with 4 levels of security
- USB and RS-232 interface; 6' USB-A to USB-B cable included
- Third-party control friendly
- Balanced inputs and outputs
- Parametric filters and comp/limiter controls feedback
- Linkwitz-Riley, Bessel and Butterworth filters with 12, 18, 24 and 48dB/octave slopes
- Parametric EQ: 1/64th to 4-octave range
- 682ms input and output delay (1,364ms total)
- Limiter on each output
- Individual input and output metering
- Safety/Compliance: CE, FCC, RoHS



Model	Inputs	Outputs	USB Inputs
Protēa™ 3.6	3	6	Front and rear
Protēa™ 4.8	4	8	Front and rear

With active front panel controls and extremely intuitive user interface, Protēa System Processors thrive in a dynamic live sound environment. The front panel is hands-on and allows quick access to all control parameters by offering dedicated function buttons, eliminating the need for hidden sub-menus. The USB inputs (front and rear panel) provide set-up via Ashly's Protēa™ Software Suite, making the SP's a great choice for permanent installations.



A backlit 2 x 20-character LCD displays channel and function settings. Dedicated front panel controls access all audio functions and system tools. There is a rear panel RS-232 port in addition to the USB ports.

Advantages of using the software include greater preset capacity, and a very intuitive visual representation of the audio routing and control process.



FR-16 16-Assigned Mixer/Gain Blocks, Remote Control

FR-8 8-Assigned Mixer/Gain Blocks, Remote Control

MADE IN THE USA



The **FR-16** (16-channel) and **FR-8** (8 channel) Network Remote Faders are a great choice for facilities that use amateur operators for sound and voice mixing.

Combine both models in a single installation via a standard Cat-5 cable.



neWR-5

neWR-5 is a programmable Ethernet based remote control unit for Ashly networked products. Connecting and powering the neWR-5 is done using standard Cat-5

cable and an IEEE 802.3af Power over Ethernet (PoE) source.

The **FR-16** (16-channel) and **FR-8** (8 channel) Network Remote Faders are a great choice for facilities that use amateur operators for sound and voice mixing.

Each slider can be programmed to allow the amount of volume control you deem appropriate for the amateur operator. The LED button at the top of each slider can be programmed as a "Mute" or A/B Source select.

The FR's can be used as either tabletop or wall-mount mixers. An optional rack-mount kit is available. The FR-8 and FR-16 are Ethernet devices that provide fader-based remote-level control for Ashly ne products having DSP capabilities.

The FR-8 controls up to 8-user assigned inputs, outputs, or mixer outputs, and the FR-16 handles up to 16.

Ashly products that can be controlled are: nXp amplifiers,

ne24.24M, ne 2-channel Power Amplifiers w/ DSP, ne Multi-Channel Power Amplifiers w/DSP, ne4800/8800 DSP Processors, and all Pêma™ Power Amplifiers.

- IEEE 802.3af power-over-Ethernet (PoE, Class 2)
- Automatic IP addressing
- Assignable fader scaling
- Mute/unmute buttons with signal or A/B input source select option
- Assignable signal level LED breakpoints
- Communication failure indicator
- User-defined labels per channel
- Panel lock-out contact closure
- Use along with neWR-5 wall remote
- Wall mount with or without standard North American wall boxes or portable tabletop use

Network Remotes

Remote Control

WR Series Remotes

WR Series Wall Remotes for all Network Amplifiers/DSP Processors

Control your system from any location with our WR Series remote controls. They fit in standard North American wall boxes and use low-gauge wire for hook-up.

WR-1: dual potentiometer remote volume control for DC level control.

WR-1.1: single potentiometer remote volume control for our new mXa-1502.

WR-1.5: single potentiometer plus a 4-position, rotary preset recall switch.

WR-2: allows selection of one of four presets via interlocking push button switches.

WR-5: programmable remote control for Ashly amps and processors with a serial data connector.

- Visual indication verifies changes
- Preset recall and preset scroll
- Input & matrix mix gain control
- Output gain control Channel mute
- Zone source select
- Logic high/low
- Serial data = 4-wire cable



WR-1



WR-1.1



WR-1.5



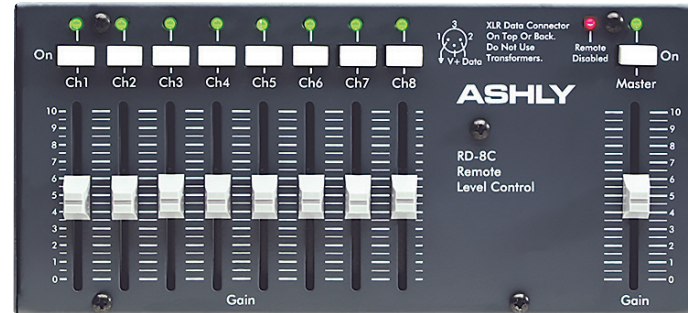
WR-2



WR-5

INA-1 Inline RS-232 Adapter

The **Inline RS-232** Adapter allows Ashly products without an RS-232 port, but with a serial data connector, to connect to RS-232 control systems. The preferred method to control Protéa ne products is with either TCP or UDP via Ethernet, however this may not always be possible in some installations where a non-Ethernet control system is used.



RD-8C/RW-8C Remote Level Controllers

The **RD-8C** is a desktop serial remote controller using an XLR serial data connector. The **RW-8C** is electronically the

same but uses a Euro-block connector and 4-gang box mounting. Both have 8 channel faders and one master

fader, each with level control and on/off button with a green LED to indicate status.



MX/LX

rack-mount mixers

ANALOG

6 and 8 Channels
4 configurations

MX-206
6-Ch Stereo
Mic Mixer

LX-308B
8-Ch Line Level Mixer

MX-406
6-Ch Stereo
Mic/Line Mixer

MX-508
8-Ch Stereo
Mic/Line
Mixer

- Stereo headphone jack with level control
- 20dB input pad switch
- +48V phantom power
- Universal power supply

LX-308B Features:

- True stereo 8-channel line level mixer, doubles as a

16-channel mono mixer. Use alone or as an expander or sub mixer for larger consoles

- All balanced inputs
- Front panel level, pan controls and individual channel muting switches w/LED status indicators
- Channels 1 and 2 are switchable for either mic or line level input

MX-406 Features:

- High-gain mic preamps (60dB)
- 2-band EQ on each input

MX-206 Features:

- High-gain mic preamps (60dB)
- Transformer isolated +24dBm 600 Ohm balanced XLR-mono output
- Stereo line in/out
- Pan control on each channel



Model	Total Inputs	Mic Preamps	Line Inputs	Outputs	Other Features
MX-206	7	6	stereo	XLR/TRS/RCA ¹	hphone out
LX-308B	8	2	8 stereo	XLR/TRS/RCA ¹	
MX-406	6	6	6 ²	XLR/TRS/RCA ¹	3-band EQ Aux 1 & 2
MX-508	8	8	8 ²	TRS	3-band EQ Aux 1 & 2

1) RCA stereo out; 2) plus RCA stereo input

- 6-channel inserts
- 20dB input pad switch
- +48V phantom power
- Universal power supply
- AUX send and return
- Stereo line in/out
- Input level and pan controls on each input

MX-508 Features:

- 3-band channel EQ with sweepable mid frequency center
- 2 AUX sends per channel
- Insert jacks on each channel
- Independent mono output with level control
- Transformer isolated +24dBm 600 Ohm balanced XLR-stereo program outputs

All mixers meet Safety/ Compliance: cTUVus, CE, FCC, RoHS

DSP AND
CONTROL
SOFTWARE
DIGITAL
MIXERS
POWER
AMPLIFIERS
DSP MATRIX,
SYSTEM AND
LOUDSPEAKER
PROCESSORS
REMOTES
DSP MIXER-
AMPLIFIERS



ASHLY® Professional
Audio System
Solutions

Ashly Audio, Inc.

847 Holt Road

Webster, NY 14580 USA

+1.800.828.6308 US toll free

+1.585.872.0010 tel

+1.585.872.0739 fax

sales@ashly.com

©2019 Ashly Audio Inc. All Rights Reserved. Ashly, Protea, péma, digiMIX and AquaControl are trademarks or registered trademarks of Ashly Audio Inc. All other trademarks are the property of their respective holders. Printed in USA

**SMALL BANDS
HOUSE OF WORSHIP
EDUCATION
RESTAURANTS
RETAIL STORES
COURTROOMS
HOSPITALITY
BARS & CLUBS
AUDITORIUMS
SPORTS FIELDS
BOARDROOMS**



www.ashly.com